

## mod. GMDX

Getto multiplo  
quadrante asciutto  
Multi jet-super dry



Disponibile versione  
acqua calda 30-90°C  
Available version  
for hot water 30-90°C

MID 2004/22CE

### Mod. GMDX

Getto multiplo, quadrante asciutto, lettura diretta. Realizzato nella versione per acqua fredda (30°C) e calda (90°C) nei calibri da  $\varnothing$  15 a 50 mm ( $1/2'' \pm 2''$ ). Esclusi rischi di corrosione e sedimentazione. Dispositivo antimagnetico a richiesta. Garanzia di lunga durata ed elevata precisione.

### Mod. GMDX

Vielfachwasserstrahl, trockenes Zifferblatt, Direktabesung. Produziert in den Versionen Kaltwasser (30°C) und Warmwasser (90°C) in den Durchmessern von 15 bis 50 mm ( $1/2$  Zoll  $\pm 2$  Zoll). Die Risiken von Rost und Ablagerungen sind ausgeschlossen. Antimagnetische Vorrichtung auf Anfrage. Garantiert lange Haltbarkeit und erhöhte Genauigkeit.

### Mod. GMDX

Multi jet, dry dial, direct reading. Made in the version for cold water (30°C) and hot water (90°C) in the diameters 15 to 50 mm ( $1/2'' \pm 2''$ ). Risks of corrosion and sedimentation free. Antimagnetic protection upon request. Long durability and elevated precision guaranteed.

### Mod. GMDX

Jets multiples, cadran sec à lecture directe, disponible en la version pour eau froide (30°C) ou eau chaude (90°C) et du calibre 15 au calibre 50 mm (de  $1/2''$  à  $2''$ ), exclus tous problèmes de corrosion et d'incrustation, équipé d'une protection antimagnétique sur demande, fiabilité dans le temps et précision élevée.

### Mod. GMDX

Chorro múltiple, esfera seca, lectura directa. Fabricado en la versión para agua fría (30°C) y caliente (90°C) en los calibres de  $\varnothing$  15 a 50 mm ( $1/2'' \pm 2''$ ). Libre de riesgos de corrosión y sedimentación. Bajo pedido se suministra con dispositivo antimagnético. Garantía de larga duración y elevada precisión.

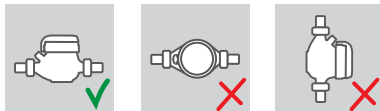
### Мод. GMDX

Многоструйный счетчик с сухим квадрантом и прямым считыванием. Выпускается в версии для холодной (30°C) и горячей (90°C) воды диаметрами условного прохода от 15 до 50 мм ( $1/2'' - 2''$ ). Исключены риски коррозии и образования осадка. Антимангнитная защита – по запросу. Гарантия долговечности и высокой точности.

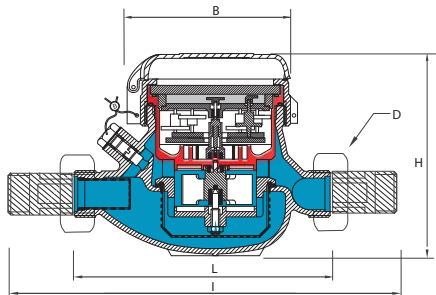
## Caratteristiche tecniche - Technical features

Calibro Size	DN	mm in	15 (1/2")	20 (3/4")	25 (1")	32 (1 1/4")	40 (1 1/2")	50 (2")
Portata Max Max Flow Rate	Q <sub>max</sub>	m <sup>3</sup> /h	3	5	7	12	20	30
Portata nominale Nominal Flow Rate	Q <sub>n</sub>	m <sup>3</sup> /h	1,5	2,5	3,5	6	10	15
Portata di transizione Transitional flow rate	Q <sub>t</sub> ±2%	l/h	120	200	280	480	800	3000
Portata minima Min flow rate	Q <sub>min</sub> ±5%	l/h	30	50	70	120	200	450
Sensibilità Sensitivity		l/h	10	14	17	27	46	75
Lettura minima Min reading		l	0,05	0,05	0,05	0,05	0,05	0,05
Lettura massima Max reading		m <sup>3</sup>	99.999	99.999	99.999	99.999	999.999	999.999
Pressione max ammissibile Max admissible pres. MAP		bar	16	16	16	16	16	16

### Posizione d'installazione Installation position



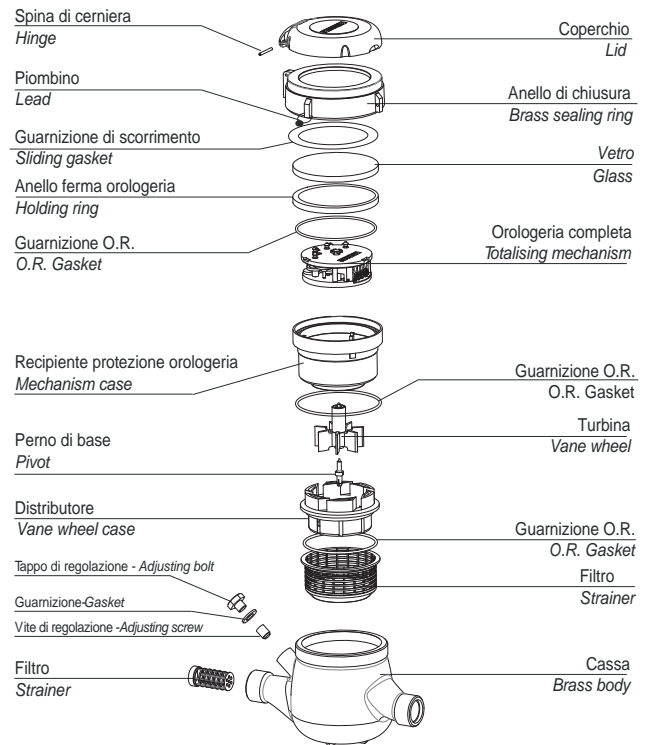
### Dimensioni e pesi - Dimensions and Weights



Calibro Size	mm in	15 (1/2")	20 (3/4")	25 (1")	32 (1 1/4")	40 (1 1/2")	50 (2")
L	mm	145-165-190	190	260	260	300	300
l	mm	225-245-270	290	360	380	440	460
H	mm	109	111	117	117	153	172
B	mm	100	100	104	104	126	160
D	Filettatura Threading	mm	3/4"	1"	1"1/4"	1"1/2"	2"
Pesi Weight	kg	1,35	1,45	2,04	2,11	4,58	7,25

Filettatura - Threading EN ISO 228-1:2000

I contatori DN 50 possono essere forniti flangiati secondo ISO 7005-2 / EN 1092-2 PN16  
The DN50 meters can be supplied flanged according to ISO 7005-2 / EN 1092-2 PN16



### Versione base - Basic version

- Classe B-H CEE75/33 ISO4064
- Disponibile in versione per acqua fredda 0°C-30°C e per acqua calda 30°C-90°C omologata MID R50 2004/22/CE
- Trasmissione magnetica
- Lettura diretta su 5 rulli numeratori protetti (6 rulli numeratori protetti su DN40 e DN50)
- Quadrante asciutto
- Con coperchio

- Class B-H CEE75/33 ISO4064
- Available for cold water 0°C-30°C and for hot water 30°C-90°C MID R50 2004/22/CE approved
- Magnetic transmission
- Direct reading on 5 numeric protected rolls (6 numeric protected rolls on DN40 and DN50)
- Dry dial
- With lid

### Su richiesta - Upon request

- Predisposizione per montaggio sistema lancia-impulsi
- Equipaggiato con sistema lancia-impulsi
- Orologeria anti-condensa
- Protezione anti frode magnetica
- Prearrangement for pulse emitter device mounting
- Equipped with pulse emitter device
- Anti-condensation dial
- Anti-magnetic fraud protection



pag 54-55

Dettagli tecnici del sistema lancia impulsi  
Technical details about the pulse emitter device

M-Bus M-Bus wireless

pag 57-63

Dettagli sull' interfacciamento con il sistema M-Bus cablato e wireless  
Technical details about the interfacing with the M-Bus wired and wireless system