

BRANCH OUTLETS / Style 08T / 08G

QUIK-T™ BRANCH OUTLETS

Maximum working pressure: 20 bar
For fire protection equipment and approved pressure ratings please contact Modgal.

QUIK-T™ ANBOHRSCHELLEN

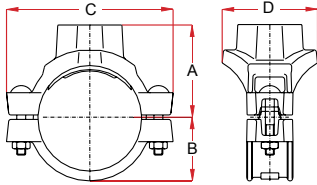
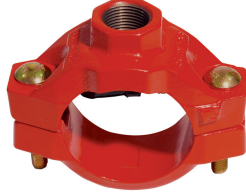
Maximaler Betriebsdruck: 20 bar
Die Brandschutzzulassungen und die Zulassungsnenndrücke erhalten Sie bei Modgal.

QUIK-T™ MECHANICAL TEES

Maximale werkdruk: 20 bar
Contacteer Modgal voor toegelaten drukklassen voor brandbeveiligingstoepassingen.

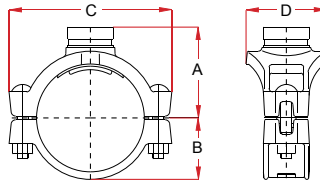
STYLE 08T

Threaded / Gewinde / Draad



STYLE 08G

Grooved / Genutet / Gegroeft



Nominal Size (Inches / DN)		Pipe Outside Diameter	Outlet		Quik-T™ Dimensions					Hole Diameter	Bolts			Weight Kg.	Approvals
Run	Outlet		Size	Type	A		B	C	D	Tolerance +3.2mm	Qty.	Size	Length		
					Thrd.	Grv.									
2" / 50	1/2" / 15	60.3	21.3	T	58.0	-	41.5	135.0	76.0	38.1	2	M10	57.0	1.36	FM / UL / LPCB / VDS
	3/4" / 20	60.3	26.9	T	58.0	-	41.5	135.0	76.0	38.1	2	M10	57.0	1.37	FM / UL / LPCB / VDS
	1" / 25	60.3	33.7	T	65.5	-	41.5	135.0	76.0	38.1	2	M10	57.0	1.45	FM / UL / LPCB / VDS
	1 1/4" / 32	60.3	42.4	T or G	69.5	76.5	41.5	135.0	82.0	44.5	2	M10	57.0	1.49	FM / UL / LPCB / VDS
	1 1/2" / 40	60.3	48.3	T or G	69.5	76.5	41.5	135.0	82.0	44.5	2	M10	57.0	1.48	FM / UL / LPCB / VDS
2 1/2" / 65	1/2" / 15	76.1	21.3	T	67.0	-	48.0	150.0	92.0	38.1	2	M12	76.0	1.82	FM / UL / LPCB / VDS
	3/4" / 20	76.1	26.9	T	69.0	-	48.0	150.0	92.0	38.1	2	M12	76.0	1.78	FM / UL / LPCB / VDS
	1" / 25	76.1	33.7	T	72.0	-	48.0	150.0	92.0	38.1	2	M12	76.0	1.75	FM / UL / LPCB / VDS
	1 1/4" / 32	76.1	42.4	T or G	76.0	82.0	48.0	150.0	92.0	50.8	2	M12	76.0	1.72	FM / UL / LPCB / VDS
	1 1/2" / 40	76.1	48.3	T or G	76.0	82.0	48.0	150.0	92.0	50.8	2	M12	76.0	1.81	FM / UL / LPCB / VDS
3" / 80	1/2" / 15	88.9	21.3	T	71.0	-	56.5	160.0	80.0	38.1	2	M12	76.0	1.90	FM / UL / LPCB / VDS
	3/4" / 20	88.9	26.9	T	76.0	-	56.5	160.0	80.0	38.1	2	M12	76.0	2.01	FM / UL / LPCB / VDS
	1" / 25	88.9	33.7	T	77.5	-	56.5	160.0	80.0	38.1	2	M12	76.0	1.93	FM / UL / LPCB / VDS
	1 1/4" / 32	88.9	42.4	T or G	87.5	95.0	56.5	160.0	95.0	50.8	2	M12	76.0	1.93	FM / UL / LPCB / VDS
	1 1/2" / 40	88.9	48.3	T or G	87.5	95.0	56.5	160.0	94.0	50.8	2	M12	76.0	1.97	FM / UL / LPCB / VDS
4" OD	2" / 50	88.9	60.3	T or G	90.0	95.0	56.5	160.0	105.0	63.5	2	M12	76.0	2.20	FM / UL / LPCB / VDS
	1 1/2" / 40	108.0	48.3	T	101.0	-	65.0	181.0	96.0	50.8	2	M12	76.0	2.36	-
4" / 100	1/2" / 15	114.3	21.3	T	87.0	-	69.0	187.0	96.0	38.1	2	M12	76.0	2.25	FM / LPCB / VDS
	3/4" / 20	114.3	26.9	T	89.0	-	69.0	187.0	96.0	38.1	2	M12	76.0	2.26	FM / LPCB / VDS
	1" / 25	114.3	33.7	T	92.0	-	69.0	187.0	96.0	38.1	2	M12	76.0	2.23	FM / LPCB / VDS
	1 1/4" / 32	114.3	42.4	T or G	104.0	104.0	69.0	187.0	96.0	50.8	2	M12	76.0	2.12	FM / UL / LPCB / VDS
	1 1/2" / 40	114.3	48.3	T or G	104.0	104.0	69.0	187.0	96.0	50.8	2	M12	76.0	2.07	FM / UL / LPCB / VDS
	2" / 50	114.3	60.3	T or G	104.0	104.0	69.0	187.0	107.0	63.5	2	M12	76.0	2.15	FM / UL / LPCB / VDS
	2 1/2" / 65	114.3	76.1	T or G	104.0	104.0	69.0	187.0	106.0	69.8	2	M12	76.0	2.53	FM / UL / VDS
5" / 125	3" / 80	114.3	88.9	T or G	112.0	104.0	69.0	187.0	130.0	88.9	2	M12	76.0	3.50	FM / UL / VDS
	1 1/4" / 32	139.7	42.4	T or G	118.5	119.0	81.5	216.0	100.0	50.8	2	M16	89.0	3.20	FM / VDS
	1 1/2" / 40	139.7	48.3	T or G	118.5	119.0	81.5	216.0	100.0	50.8	2	M16	89.0	3.23	FM / VDS
6" OD	2" / 50	139.7	60.3	T or G	120.5	119.0	81.5	216.0	106.0	63.5	2	M16	89.0	3.37	FM / VDS
	2 1/2" / 65	139.7	76.1	G	-	119.0	81.5	216.0	107.0	69.8	2	M16	89.0	3.50	FM / VDS
	1 1/2" / 40	159.0	48.3	T	124.0	-	93.0	245.0	96.0	50.8	2	M16	120.0	3.17	VDS
6" / 150	1 1/4" / 32	165.1	42.4	T or G	126.5	128.5	93.0	245.0	96.0	50.8	2	M16	120.0	3.69	FM / LPCB / VDS
	1 1/2" / 40	165.1	48.3	T or G	126.5	128.5	93.0	245.0	96.0	50.8	2	M16	120.0	3.69	FM / LPCB / VDS
	2" / 50	165.1	60.3	T or G	126.5	132.0	93.0	245.0	107.0	63.5	2	M16	120.0	3.86	FM / LPCB / VDS
	2 1/2" / 65	165.1	76.1	T or G	135.0	129.0	93.0	245.0	107.0	69.8	2	M16	120.0	4.23	FM / LPCB / VDS
	3" / 80	165.1	88.9	T or G	135.0	135.5	93.0	245.0	140.0	88.9	2	M16	120.0	4.80	FM / UL / VDS
	4" / 100	165.1	114.3	T or G	143.0	137.0	96.0	245.0	156.0	114.3	2	M16	120.0	6.80	FM / UL / VDS
	1 1/4" / 32	168.3	42.4	T or G	133.0	133.0	95.0	245.0	96.0	50.8	2	M16	120.0	3.62	FM / UL / LPCB / VDS
8" / 200	1 1/2" / 40	168.3	48.3	T or G	133.0	130.5	95.0	245.0	96.0	50.8	2	M16	120.0	3.63	FM / UL / LPCB / VDS
	2" / 50	168.3	60.3	T or G	130.0	131.5	95.0	245.0	107.0	63.5	2	M16	120.0	3.92	FM / UL / LPCB / VDS
	2 1/2" / 65	168.3	76.1	T or G	140.5	132.5	95.0	245.0	107.0	69.8	2	M16	120.0	4.05	FM / UL / LPCB / VDS
	3" / 80	168.3	88.9	T or G	137.5	138.5	95.0	247.0	140.0	88.9	2	M16	120.0	4.85	FM / UL / VDS
	4" / 100	168.3	114.3	T or G	144.0	139.5	97.0	247.0	163.0	114.3	2	M16	120.0	4.34	FM / UL / LPCB / VDS
8" / 200	2 1/2" / 65	219.1	76.1	T or G	157.5	155.0	123.0	320.0	120.0	69.8	2	M20	120.0	4.75	-
	3" / 80	219.1	88.9	T or G	161.0	161.0	123.0	320.0	138.0	88.9	2	M20	120.0	5.52	VDS
	4" / 100	219.1	114.3	T or G	171.0	161.0	123.0	320.0	164.0	114.3	2	M20	120.0	5.59	VDS